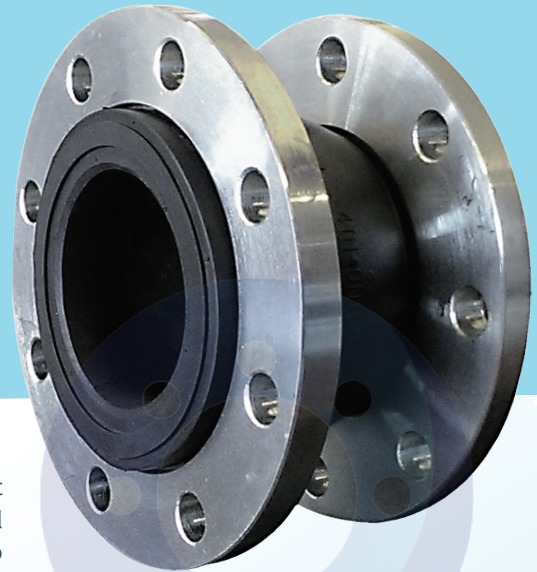


Single Sphere Rubber Expansion Joint

R1

Features

Our rubber expansion joints are designed to accommodate misalignment and both axial and lateral movement. They are also used to absorb thermal expansion, reduce noise and vibration from mechanical equipments. Due to their available type of materials, they are suitable for a variety range of media. In all, our rubber expansion joints are ideal to be used to protect and serve the piping systems.



Application

Color Code	Inner Material	Cover Material	Application
Blue	Neoprene	Neoprene	Excellent Aging resistance, for alkaline and acid salt solutions and aldehydes.
Red	EPDM	EPDM	Higher temp. good ozone resistance, resilience, bend easier lower temp, but not suitable for oils.
Black	Butyl	Butyl	Lower impermeable; resistance offer to ozone, weather, abrasion, chemical.
Yellow	Nitrile	Neoprene	Recommend for oils, greases, petrol, fats, glycols, alcohols, ethers and gas.
White	Nitrile	Nitrile	For drinking water or food grade white color quality up to 150 psi/10bar at 158°F/70°C
Green	Hypalon	Hypalon	Ozone resistance sunlight stable, for strong acids, alkalis and chemicals.

Specification

Nominal Diameter		Face to Face Inch	Travelmm	Allowable Movement (mm)				Pressures	
Inch	mm			Total Compressed Extended	Axial Compressed	Axial Extension	Lateral Deflection	Angular Deflection	Positive ¹ PSIG
1-1/4"	32	6	140-162	13	10	12	31	225	660
1-1/2"	40	6	140-162	13	10	12	27	225	660
2"	50	6	140-162	13	10	12	20	225	660
2-1/2"	65	6	140-162	13	10	12	17	225	660
3"	80	6	140-162	13	10	12	14	225	660
4"	100	6	133-165	13	10	12	14	225	660
5"	125	6	133-165	19	12	12	11	225	660
6"	150	6	133-165	19	12	12	9	225	660
8"	200	6	133-165	19	12	12	7	225	660
10"	250	8	178-219	25	16	19	7	225	660
12"	300	8	178-219	25	16	19	6	225	660
14"	350	8	178-219	25	16	19	5	150	660
16"	400	8	178-219	25	16	19	4	150	660
18"	450	8	178-219	25	16	19	4	150	660
20"	500	8	178-219	25	16	19	3	150	660

FOR PRODUCT SELECTION, PLEASE CONSULT US FOR PROFESSIONAL ADVICE.

Note:

- 1: The pressure rating is at 175°F. As Temperature Increases, the pressure rating is reduced.
- 2: For vacuum application, please contact us for professional advice. Negative pressure rating is valid if and only if vacuum ring is installed.
- 3: For size from 8"~12", control unit installation is required for working pressure at 225 psig.
- 4: For size from 14"~24", control unit installation is required for working pressure at 150 psig.