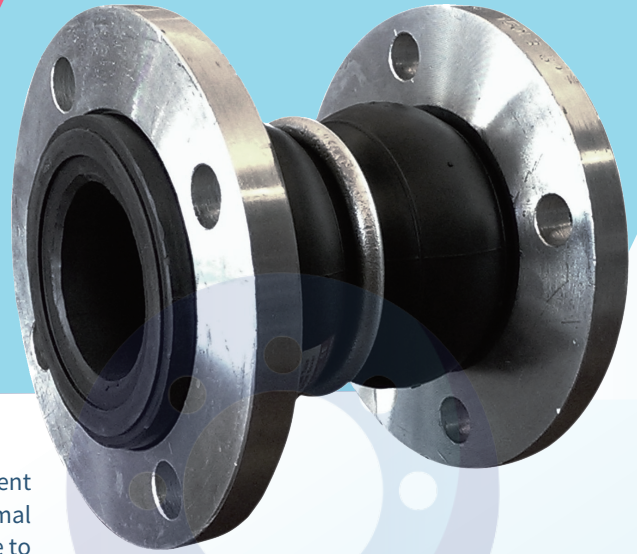


Double Spheres Rubber Expansion Joint

R2

Features

Our rubber expansion joints are designed to accommodate misalignment and both axial and lateral movement. They are also used to absorb thermal expansion, reduce noise and vibration from mechanical equipments. Due to their available type of materials, they are suitable for a variety range of media. In all, our rubber expansion joints are ideal to be used to protect and serve the piping systems.



Application

| Color Code | Inner Material | Cover Material | Application |
|------------|----------------|----------------|--|
| Blue | Neoprene | Neoprene | Excellent Aging resistance, for alkaline and acid salt solutions and aldehydes. |
| Red | EPDM | EPDM | Higher temp. good ozone resistance, resilience, bend easier lower temp, but not suitable for oils. |
| Black | Butyl | Butyl | Lower impermeable; resistance offer to ozone, weather, abrasion, chemical. |
| Yellow | Nitrile | Neoprene | Recommend for oils, greases, petrol, fats, glycols, alcohols, ethers and gas. |
| White | Nitrile | Nitrile | For drinking water or food grade white color quality up to 150 psi/10bar at 158°F/70°C |
| Green | Hypalon | Hypalon | Ozone resistance sunlight stable, for strong acids, alkalis and chemicals. |

Specification

| Nominal Diameter | | Face to Face Inch | Travelmm | Allowable Movement (mm) | | | | Pressures | |
|------------------|-----|-------------------|----------|---------------------------|------------------|-----------------|--------------------|--------------------|----------------------------|
| Inch | mm | | | Total Compressed Extended | Axial Compressed | Axial Extension | Lateral Deflection | Angular Deflection | Positive ¹ PSIG |
| 1" | 25 | 5 | 85-140 | 35 | 20 | 30 | 30 | 225 | 660 |
| 1-1/4" | 32 | 7 | 125-205 | 50 | 30 | 38 | 38 | 225 | 660 |
| 1-1/2" | 40 | 7 | 125-205 | 50 | 30 | 38 | 38 | 225 | 660 |
| 2" | 50 | 7 | 125-205 | 50 | 30 | 38 | 38 | 225 | 660 |
| 2-1/2" | 65 | 7 | 125-205 | 50 | 30 | 38 | 36 | 225 | 660 |
| 3" | 80 | 7 | 125-205 | 50 | 30 | 38 | 36 | 225 | 660 |
| 4" | 100 | 9 | 175-260 | 50 | 35 | 32 | 30 | 225 | 660 |
| 5" | 125 | 9 | 175-260 | 50 | 35 | 32 | 25 | 225 | 660 |
| 6" | 160 | 9 | 175-260 | 50 | 35 | 32 | 21 | 225 | 660 |
| 8" | 200 | 13 | 275-360 | 50 | 35 | 28 | 17 | 225 | 660 |
| 10" | 250 | 13 | 275-360 | 50 | 35 | 28 | 13 | 225 | 660 |
| 12" | 300 | 13 | 275-360 | 50 | 35 | 28 | 9 | 225 | 660 |
| 14" | 350 | 14 | 305-380 | 45 | 30 | 25 | 8 | 150 | 550 |
| 16" | 400 | 14 | 305-380 | 45 | 30 | 25 | 7 | 150 | 450 |
| 18" | 450 | 14 | 305-380 | 45 | 30 | 25 | 6 | 150 | 400 |
| 20" | 500 | 14 | 305-380 | 45 | 30 | 25 | 6 | 150 | 350 |
| 24" | 600 | 14 | 305-380 | 45 | 30 | 25 | 5 | 150 | 350 |

FOR PRODUCT SELECTION, PLEASE CONSULT US FOR PROFESSIONAL ADVICE.

Note:

- 1: The pressure rating is at 175°F. As Temperature Increases, the pressure rating is reduced.
- 2: For vacuum application, please contact us for professional advice.
- 3: For size from 8"~12", control unit installation is required for working pressure at 225 psig.
- 4: For size from 14"~24", control unit installation is required for working pressure at 150 psig.