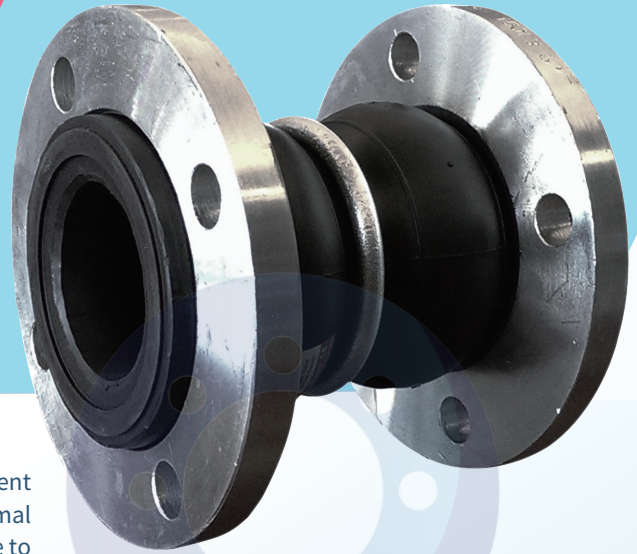


## Double Spheres Rubber Expansion Joint

# REJ 2

### Features

Our rubber expansion joints are designed to accommodate misalignment and both axial and lateral movement. They are also used to absorb thermal expansion, reduce noise and vibration from mechanical equipments. Due to their available type of materials, they are suitable for a variety range of media. In all, our rubber expansion joints are ideal to be used to protect and serve the piping systems.



### Application

Color Code	Inner Material	Cover Material	Application
Blue	Neoprene	Neoprene	Excellent Aging resistance, for alkaline and acid salt solutions and aldehydes.
Red	EPDM	EPDM	Higher temp. good ozone resistance, resilience, bend easier lower temp, but not suitable for oils.
Black	Butyl	Butyl	Lower impermeable; resistance offer to ozone, weather, abrasion, chemical.
Yellow	Nitrile	Neoprene	Recommend for oils, greases, petrol, fats, glycols, alcohols, ethers and gas.
White	Nitrile	Nitrile	For drinking water or food grade white color quality up to 150 psi/10bar at 158°F/70°C
Green	Hypalon	Hypalon	Ozone resistance sunlight stable, for strong acids, alkalis and chemicals.

### Specification

Nominal Diameter		Face to Face Inch	Travelmm	Allowable Movement (mm)				Pressures	
Inch	mm			Total Compressed Extended	Axial Compressed	Axial Extension	Lateral Deflection	Angular Deflection	Positive <sup>1</sup> PSIG
1"	25	5	85-140	35	20	30	30	225	660
1-1/4"	32	7	125-205	50	30	38	38	225	660
1-1/2"	40	7	125-205	50	30	38	38	225	660
2"	50	7	125-205	50	30	38	38	225	660
2-1/2"	65	7	125-205	50	30	38	36	225	660
3"	80	7	125-205	50	30	38	36	225	660
4"	100	9	175-260	50	35	32	30	225	660
5"	125	9	175-260	50	35	32	25	225	660
6"	160	9	175-260	50	35	32	21	225	660
8"	200	13	275-360	50	35	28	17	225	660
10"	250	13	275-360	50	35	28	13	225	660
12"	300	13	275-360	50	35	28	9	225	660
14"	350	14	305-380	45	30	25	8	150	550
16"	400	14	305-380	45	30	25	7	150	450
18"	450	14	305-380	45	30	25	6	150	400
20"	500	14	305-380	45	30	25	6	150	350
24"	600	14	305-380	45	30	25	5	150	350

\*FOR PRODUCT SELECTION, PLEASE CONSULT US FOR PROFESSIONAL ADVICE.\*

Note:

- 1: The pressure rating is at 175°F. As Temperature Increases, the pressure rating is reduced.
- 2: For vacuum application, please contact us for professional advice.
- 3: For size from 8"~12", control unit installation is required for working pressure at 225 psig.
- 4: For size from 14"~24", control unit installation is required for working pressure at 150 psig.